

BUILDING HEALTHY COMMUNITIES: DEL NORTE AND ADJACENT TRIBAL LANDS

Logic Model and Priority Outcomes for 2010 -2013

Our Shared Premise for Our Building Healthy Communities Effort:

Our children should dream about their futures - and those dreams should be framed by family, health, safety, economic security, education and hope. We believe that their dreams are our community responsibility. We believe that early intervention and prevention are the critical keys to strengthening families, ensuring the economic assets of the families, preventing families from entering the justice and child welfare systems, instilling a life-long love of learning, and enhancing the health of every resident.



Researched, Developed, Written and Authorized by:
The DN&ATL Collaborative

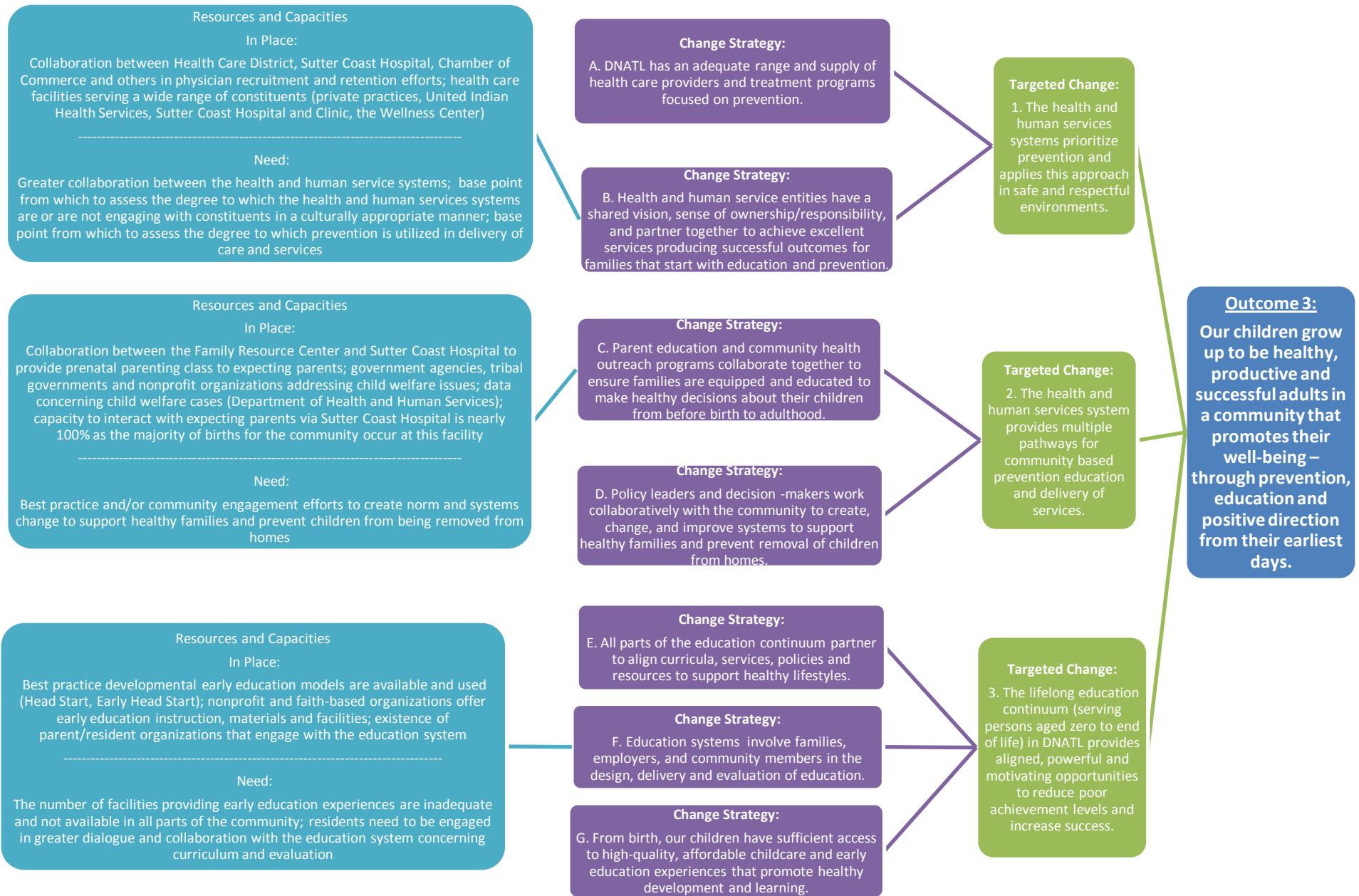
A Partnership of:
Residents, Youth, System Leaders and Non-Profit Advocates

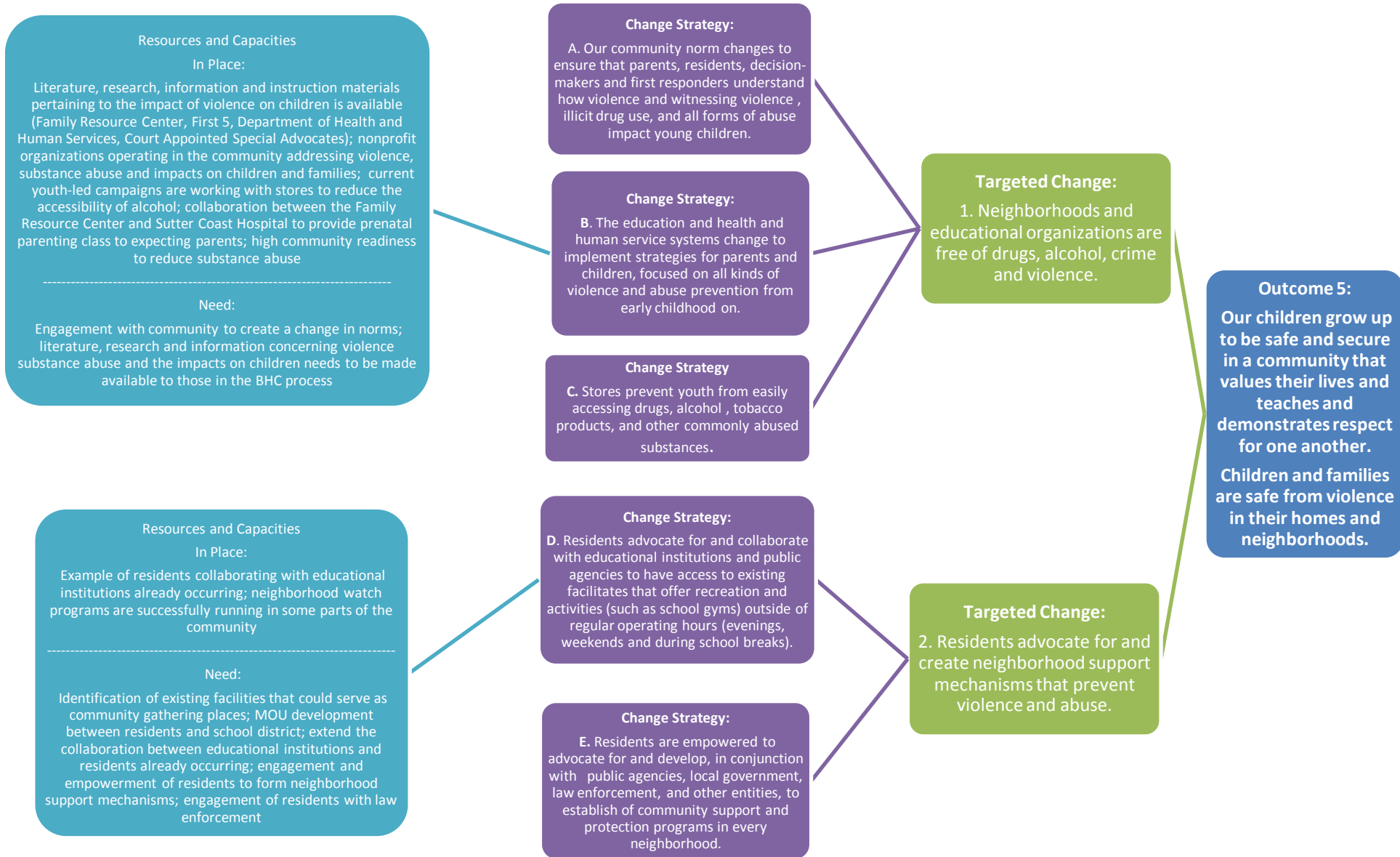
Funded by: The California Endowment
With:

Sutter Coast Hospital, Del Norte Health Care District,
Humboldt Area Foundation, the Wild Rivers Community
Foundation and the William D and Patricia B Smullin
Foundation

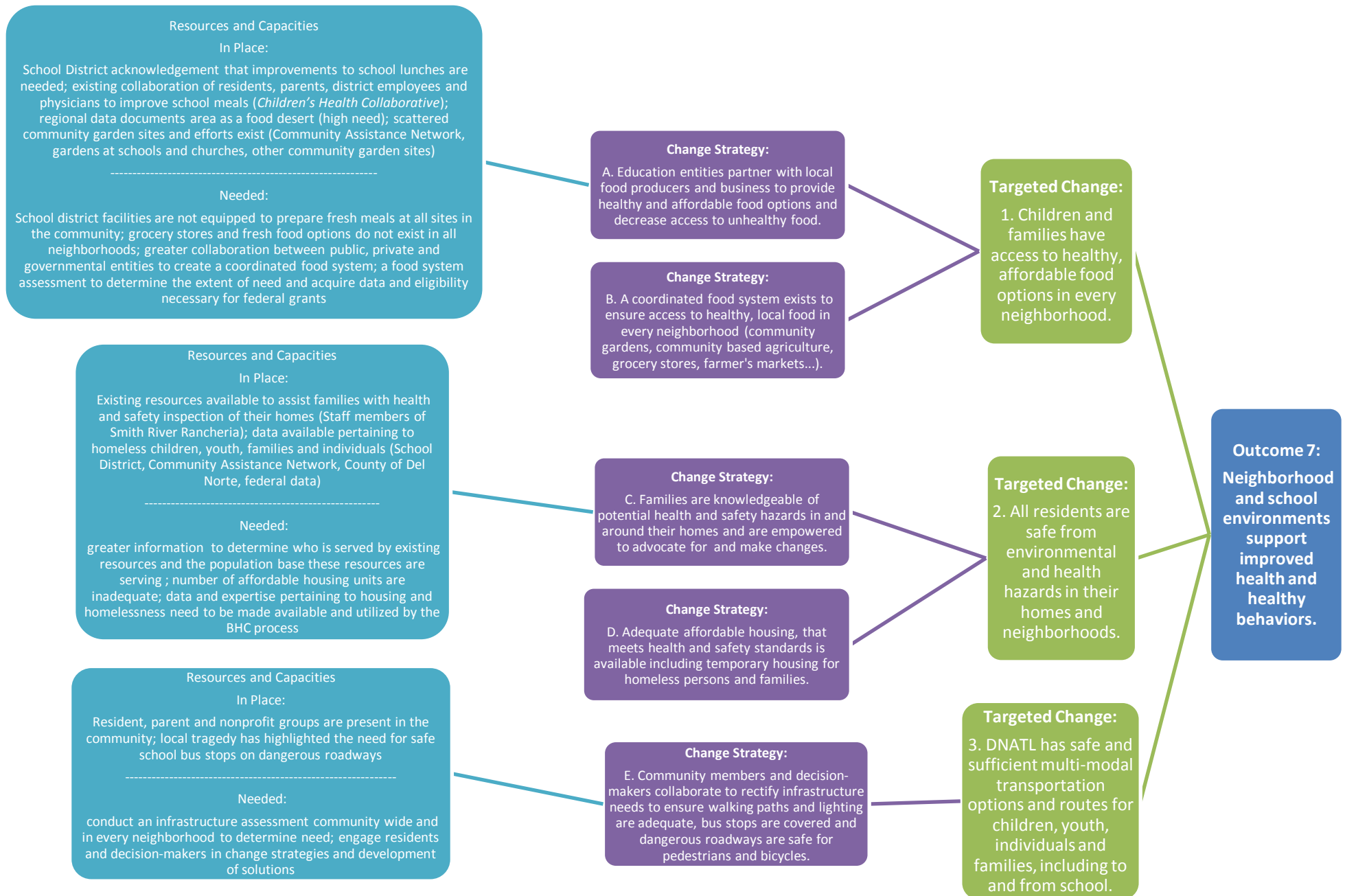
7/23/2010

Logic Model: Desired Outcomes, Targeted Changes and Change Strategies. Resources and Capacities.





Logic Model: Desired Outcomes, Targeted Changes and Change Strategies. Resources and Capacities.



Logic Model: Desired Outcomes, Targeted Changes and Change Strategies. Resources and Capacities.

